

# DIY mini house kits – Charming House

S902



S902 Instruction manual

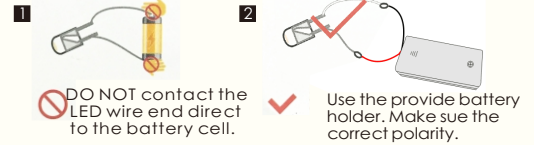
# NOTICE OF ASSEMBLE

## Tips for assembling

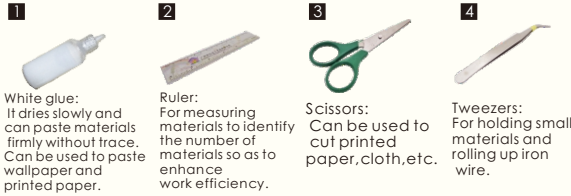
1. Pictures shown on the package may be slightly different from the actual product.
2. All the materials are taken in the operation step, put the remaining materials back into the original pocket until the installation is completed. (Avoid material loss during installation)
3. The dimensions indicated in the step diagram are "cm".
4. If there have template paper material, please cut the material according to the template to avoid mistakes..
5. According to the part rule example at the bottom of this page, refer to the part on the part number drawing, find the material object and compare with the material list, confirm and install. (Wooden parts only)
6. Glue should not be applied too much, so as not to dry longer, overflow will affect the effect of the finished product.
7. Part shapes may differ from the photographs depending on the production batch

## Testing on LED function

Be sure to test the LED lights before making the lighting, note that the LED white wire to the negative, gray wire to the positive reference to the following figure operation test.



## Product comes with tool:



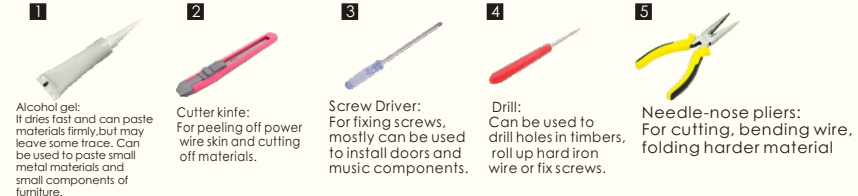
**1**  
White glue:  
It dries slowly and can paste materials firmly without trace. Can be used to paste wallpaper and printed paper.

**2**  
Ruler:  
For measuring materials to identify the number of materials so as to enhance work efficiency.

**3**  
Scissors:  
Can be used to cut printed paper, cloth, etc.

**4**  
Tweezers:  
For holding small materials and rolling up iron wire.

## Bring your own tools:



**1**  
Alcohol gel:  
It dries fast and can paste materials firmly, but may leave some trace. Can be used to paste small metal materials and small components of furniture.

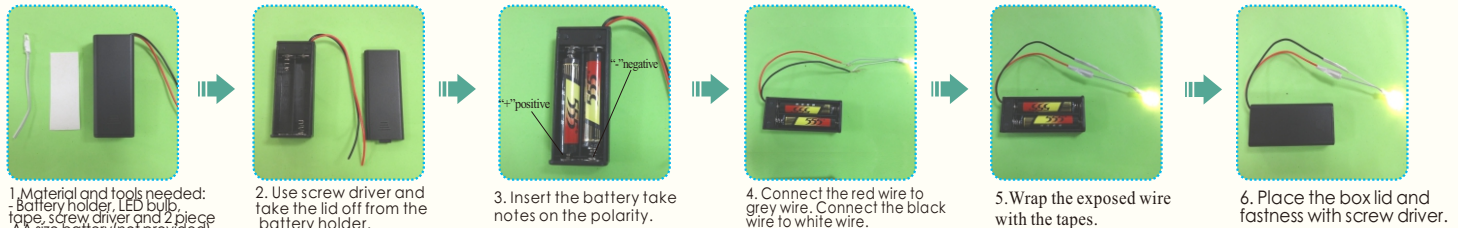
**2**  
Cutter knife:  
For peeling off power wire skin and cutting off materials.

**3**  
Screw Driver:  
For fixing screws, mostly can be used to install doors and music components.

**4**  
Drill:  
Can be used to drill holes in timbers, roll up hard iron wire or fix screws.

**5**  
Needle-nose pliers:  
For cutting, bending wire, folding harder material

## How to assemble the battery holder



**1** Material and tools needed:  
- Battery holder, LED bulb, tape, screw driver and 2 piece AA size battery(not provided)

**2** Use screw driver and take the lid off from the battery holder.

**3** Insert the battery take notes on the polarity.

**4** Connect the red wire to grey wire. Connect the black wire to white wire.

**5** Wrap the exposed wire with the tapes.

**6** Place the box lid and fastness with screw driver.

## Example of parts rule:

A01: The parts are directly in the box.; B01: parts in bag B; C01: part in bag C, and so on.

(Note: display the printing paper A09-01 in the step: the printing paper is placed directly in the box, part number is A09-01)

## details of miniature kit

Name	Material package
printing paper	Bag A-A09(All printing and template papers are shown on a09 paper)
Television	bag C +bag E +printing paper
Dining table	bag C +bag D + printing paper
Shelving	bag C + printing paper
Wooden shoes	bag C +printing paper
wall light	bag C +bag D +bag E +printing paper
Bed	bag D + printing paper
Fruit tree	bag D
Orange tree	bag D
Big potted plant	bag D +bag E
Medium potted plant	bag D
Small potted plant	bag D
Wall shelving	bag B
lucky cat	printing paper
photo	printing paper
outer frame	bag A +bag B +bag E +printing paper
battery holder	bag E
dust cover	bag A

Welcome to the little DIY world, now come with me!

## Thumbnail of material list( reference only)



## Thumbnail of printing paper & template paper( reference only)



## Symbol description used



Install parts in the opposite direction



Install the same parts on both sides



Pay attention to the direction of installation material B stick to material A



Pay attention to the direction of installation material A stick to material B



Fold in half according to dotted line



fold double edge to center dotted line



Fold four sides to the middle

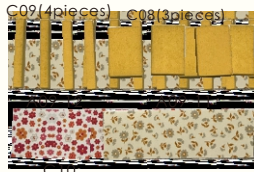


combination part according to the red diamond so on.





Shelving

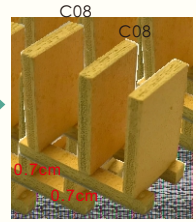


C11

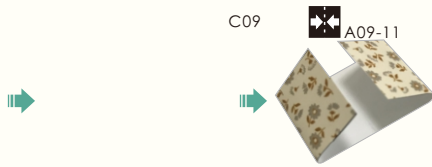
C09

C09

C08



0.2cm



C09

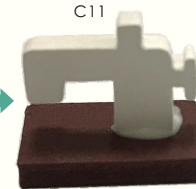


A09-11



A09-12

(fold)



C11

C10



well done, come on!

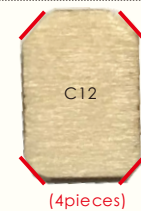


Wooden shoes

C09



C12(4pieces)



C12

(4pieces)

Cut off the four right angles of C12 as shown.

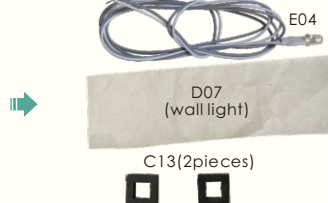


A09-14

attach A09-20 on C12 as shown.

Cut out the material D07 according to the template paper before making.

Wall light



E04

D07  
(wall light)

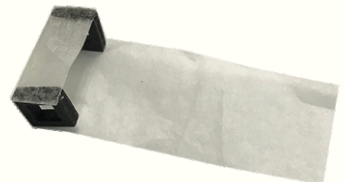
C13(2pieces)

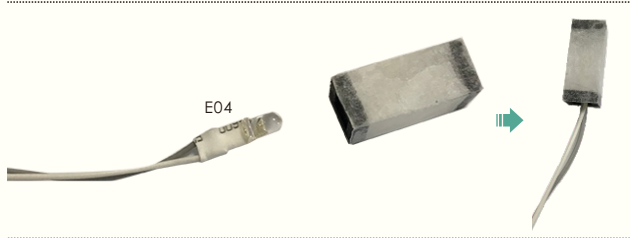


C13

C13

D07  
(wall light)

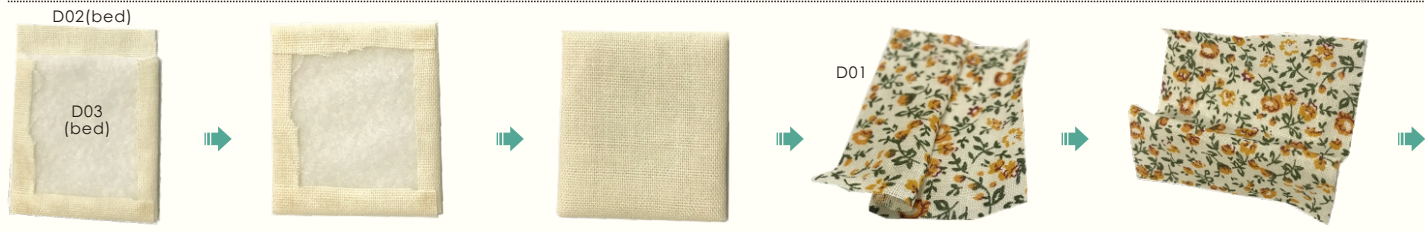




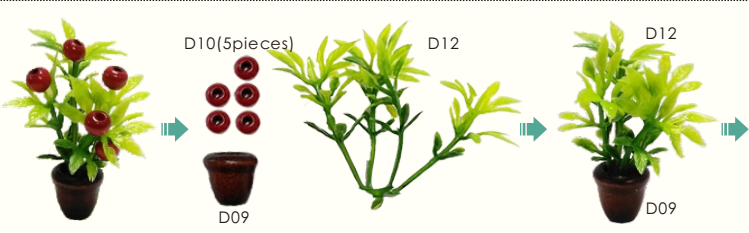
Bed



Cut out the material D02,D03 and D04 according to the template paper before making.

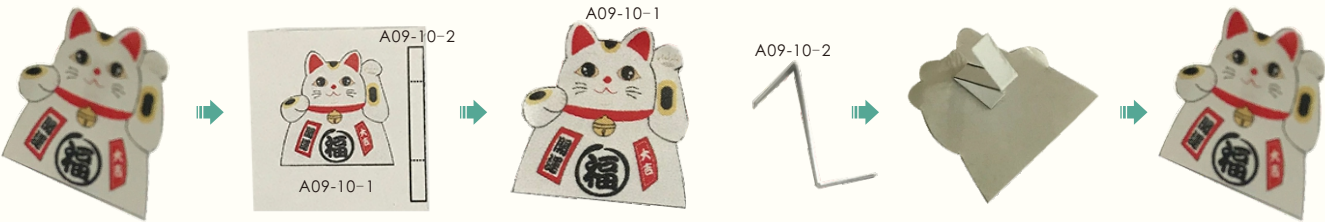


Fruit tree

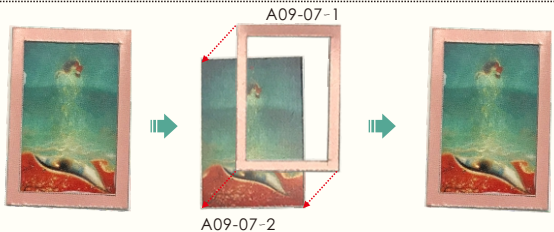




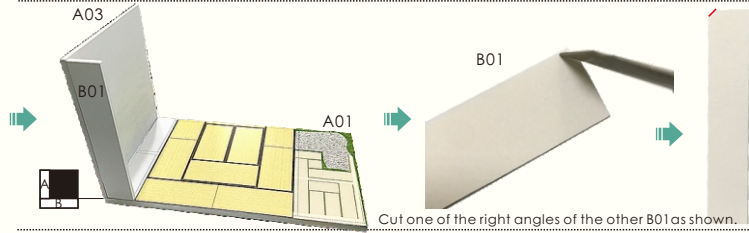
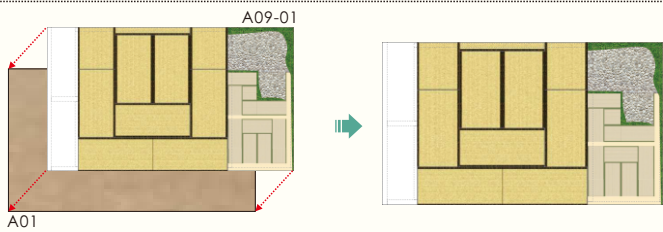
Lucky cat



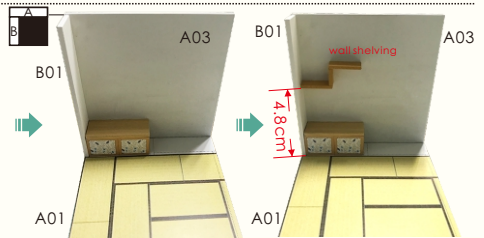
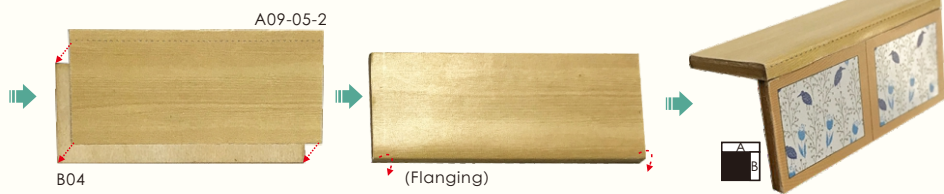
Photo

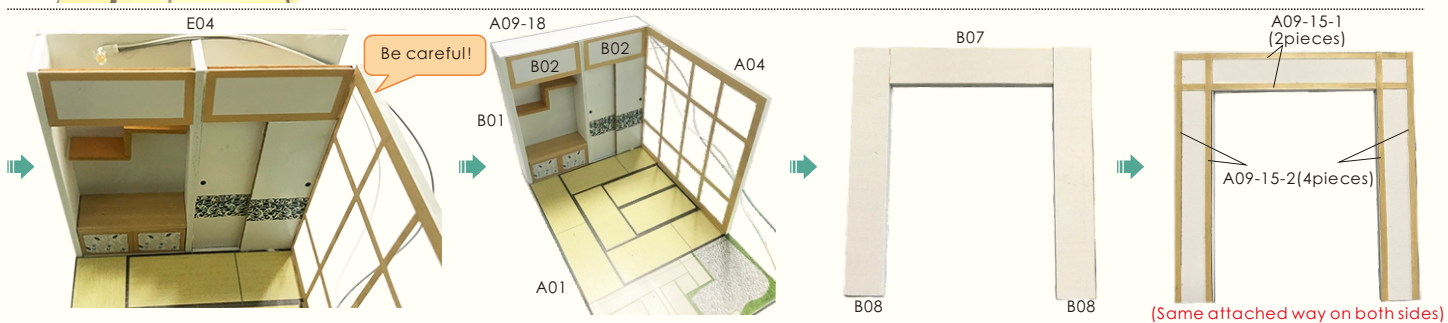
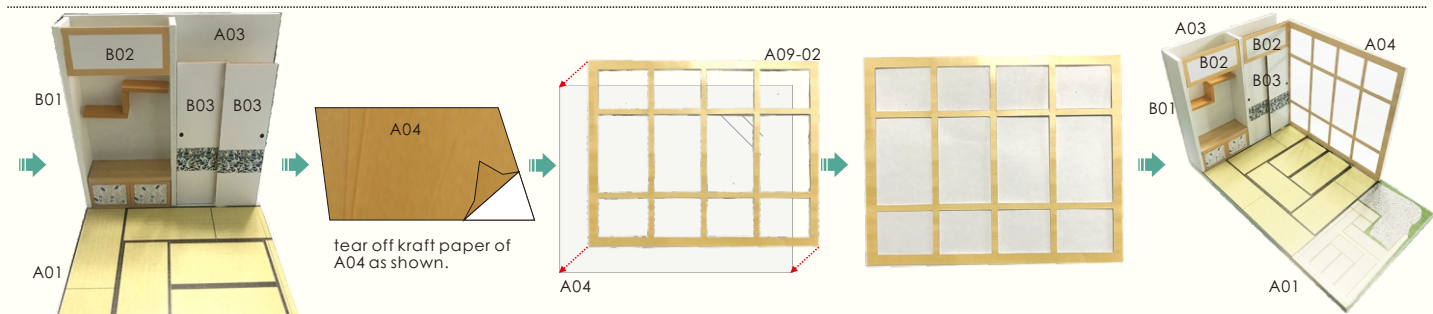
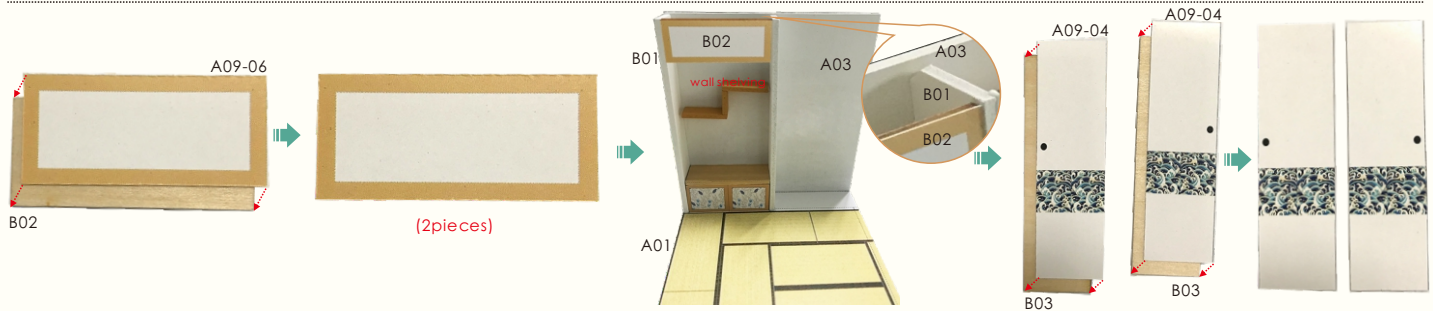


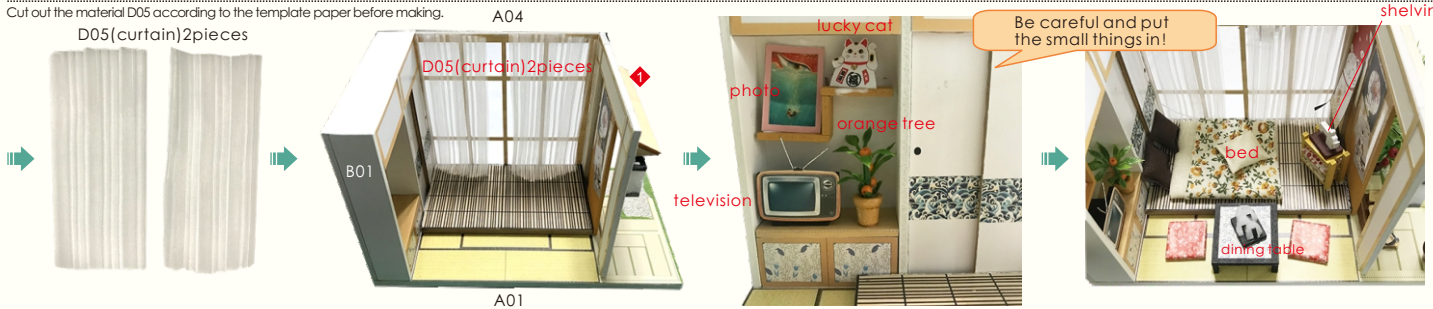
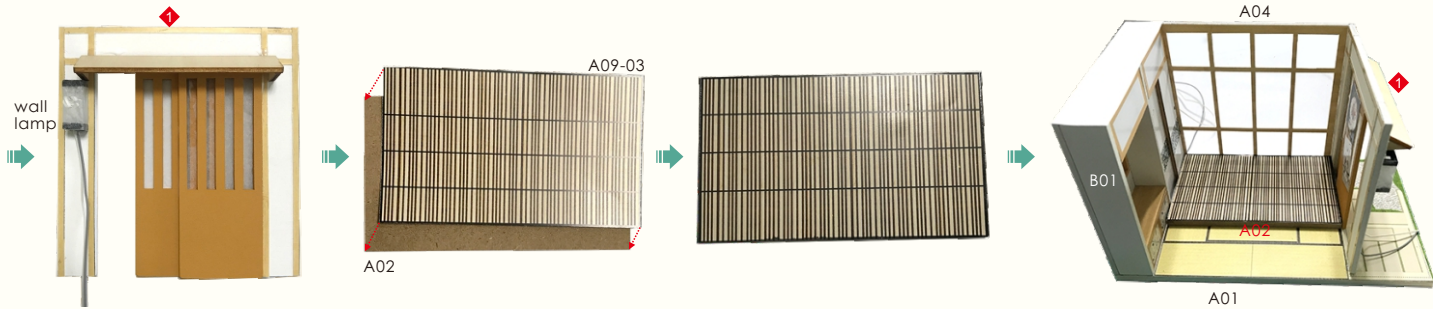
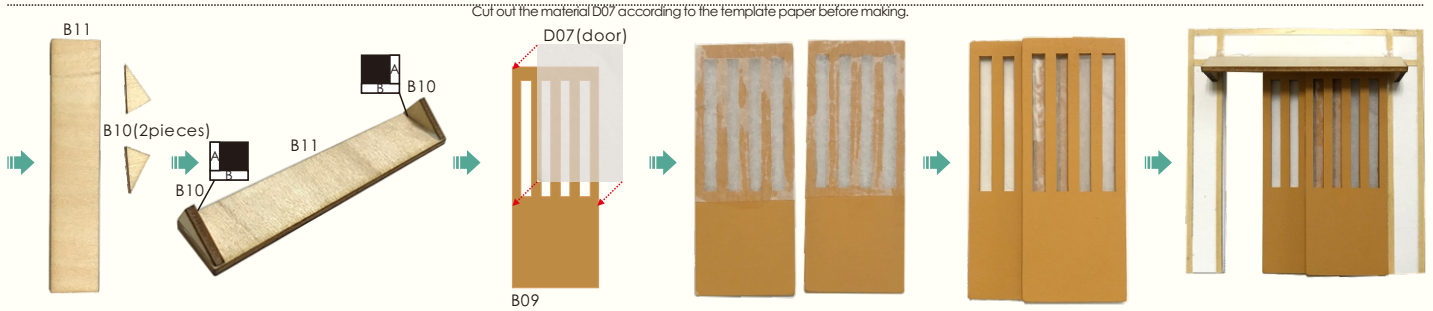
Outer frame



Cut one of the right angles of the other B01 as shown.





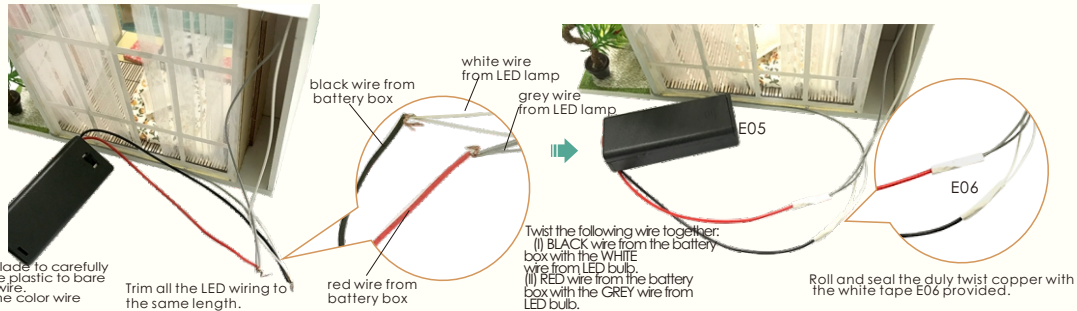




## How to assemble the battery holder

**Statement: the lamp wires cannot be inserted into the output socket.**

- Can use two AAA batteries
- Please notice the place of anode and cathode when pit in the batteries
- Rechargeable batteries are not blunt electricity
- Rechargeable batteries can only be charged under adult supervision
- Rechargeable batteries should be removed from the toy before charging
- Different types of batteries cannot mix;
- Do not mix new batteries in use with semi-used batteries.
- Run out of battery should be removed from the toy
- The power shall not be short circuit



Use a craft blade to carefully skim over the plastic to bare the copper wire.  
Twist the same color wire together.

Trim all the LED wiring to the same length.

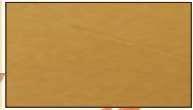
Twist the following wire together:  
(I) BLACK wire from the battery box with the WHITE wire from LED bulb.  
(II) RED wire from the battery box with the GREY wire from LED bulb.

Roll and seal the duly twist copper with the white tape E06 provided.



Attach A09-22 well as shown.

## Installation of dust proof cover



scale 1:7  
A05 Transparent cover  
16.8\*9.7\*0.15cm  
1 piece



scale 1:6  
A06 Transparent cover  
14.7\*9.7\*0.15cm  
1 piece



scale 1:5  
A07 Transparent cover  
9.7\*9.2\*0.15cm  
1 piece

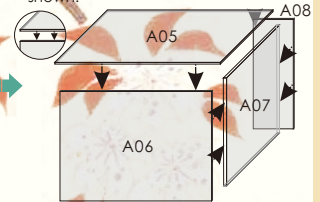


scale 1:4  
A08 Transparent cover  
9.7\*4.2\*0.15cm  
1 piece

1. Tear off kraft paper of each piece of transparent cover.



2. Paste A05, A06, A07 and A08 together to complete the dust proof cover as shown.



## Photo of Dust proof cover



**Attention: Please keep the instruction for future enquires after installation.**