

S932



Happy Theater
S932 Instruction manual

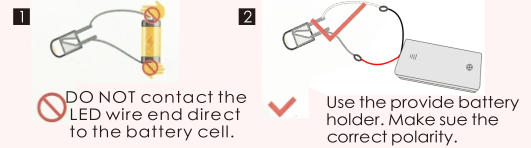
NOTICE OF ASSEMBLE

Tips for assembling

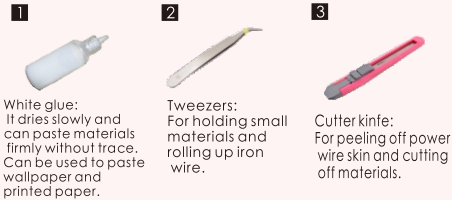
1. Pictures shown on the package may be slightly different from the actual product.
2. All the materials are taken in the operation step, put the remaining materials back into the original pocket until the installation is completed. (Avoid material loss during installation)
3. The dimensions indicated in the step diagram are "cm".
4. If there have template paper material, please cut the material according to the template to avoid mistakes..
5. According to the part rule example at the bottom of this page, refer to the part on the part number drawing, find the material object and compare with the material list, confirm and install. (Wooden parts only)
6. Glue should not be applied too much, so as not to dry longer, overflow will affect the effect of the finished product.
7. Part shapes may differ from the photographs depending on the production batch

Testing on LED function

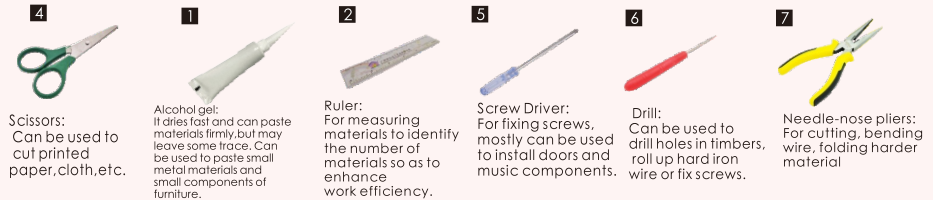
Be sure to test the LED lights before making the lighting, note that the LED white wire to the negative, gray wire to the positive reference to the following figure operation test.



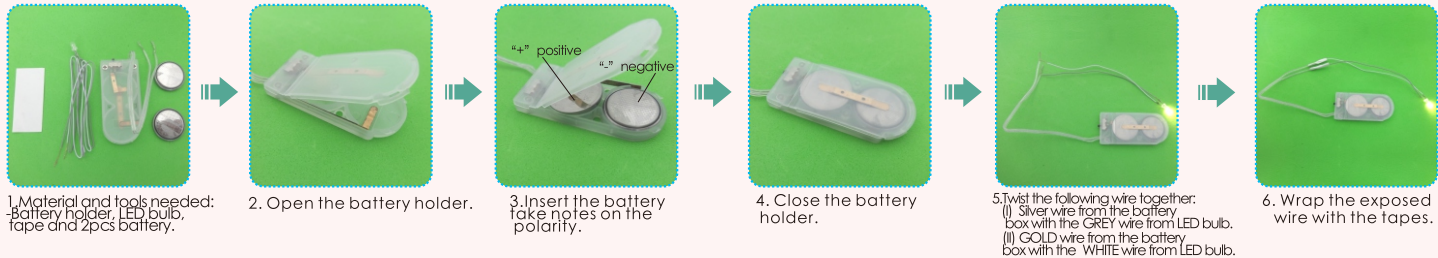
Product comes with tool:



Bring your own tools:

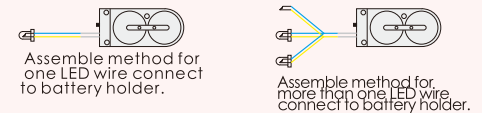


How to assemble the battery holder



Example of parts rule:

A01: The parts are directly in the box.; B01: parts in bag B; C01: part in bag C, and so on.
 (Note: display the printing paper A05-01 in the step: the printing paper is placed directly in the box, part number is A05-01)



NOTICE OF ASSEMBLE

details of miniature kit

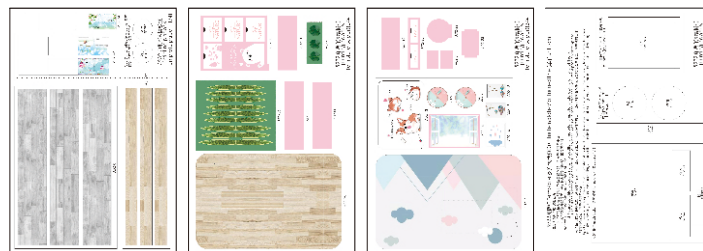
Name	Material package
printing paper	Bag A-A02(All printing and template papers are shown on A02 paper, total 4 piece of A5)
cabinet	B bag + C bag + printing paper
dressing table	B bag + C bag+ printing paper
chair	B bag
bed	B bag + C bag + printing paper
round table	B bag + C bag + printing paper
potted plant	C bag + printing paper
outer frame	A bag + B bag + C bag + D bag + printing paper

Welcome to the little DIY world, now come with me!

Thumbnail of material list(reference only)



Thumbnail of printing paper & template paper(reference only)



Symbol description used



Install parts in the opposite direction



Install the same parts on both sides



Pay attention to the direction of installation material B



Pay attention to the direction of installation material A



Pay attention to the direction of installation material A



Pay attention to the direction of installation material A



Fold in half according to dotted line



fold double edge to center dotted line



Fold four sides to the middle



Pay attention to the direction of installation material A



Pay attention to the direction of installation material B



Pay attention to the direction of installation material A

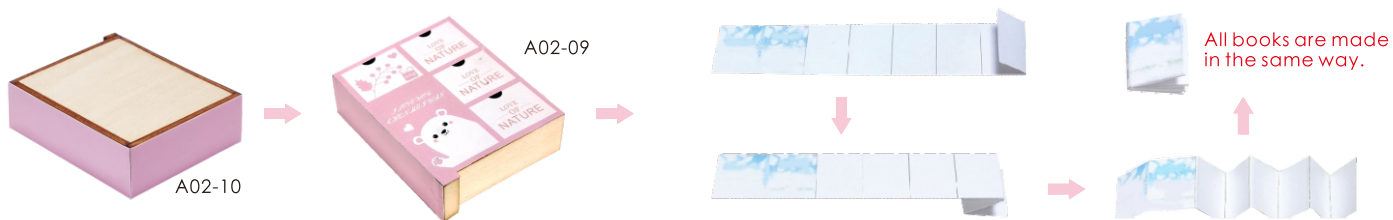
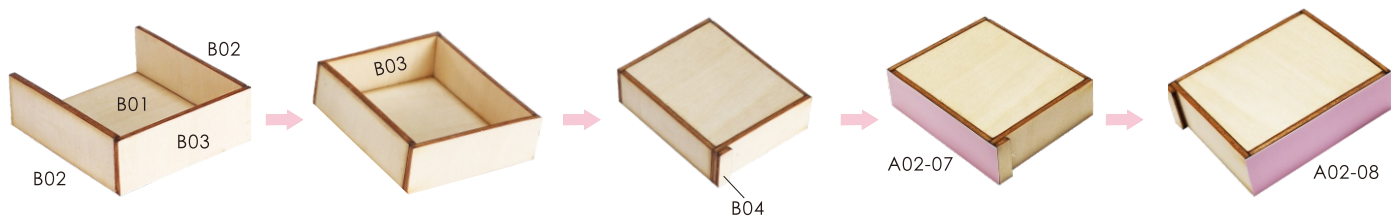
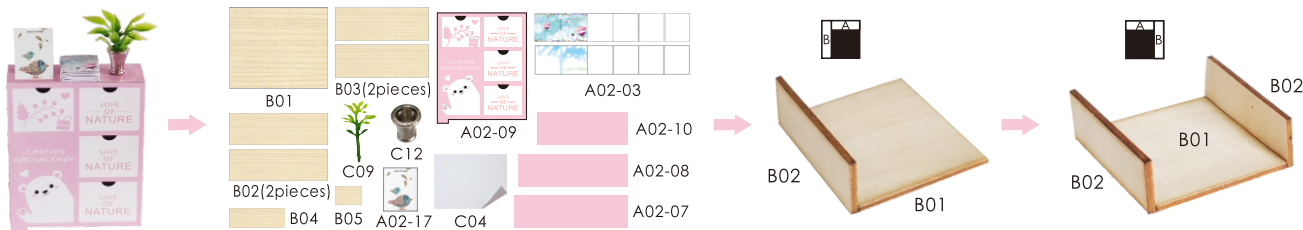


Pay attention to the direction of installation material A

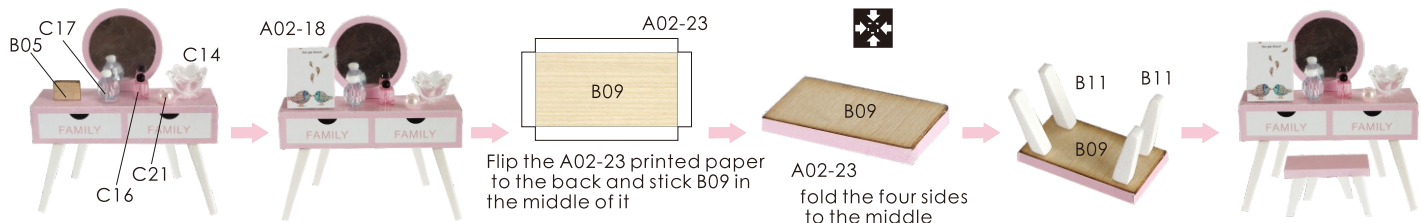
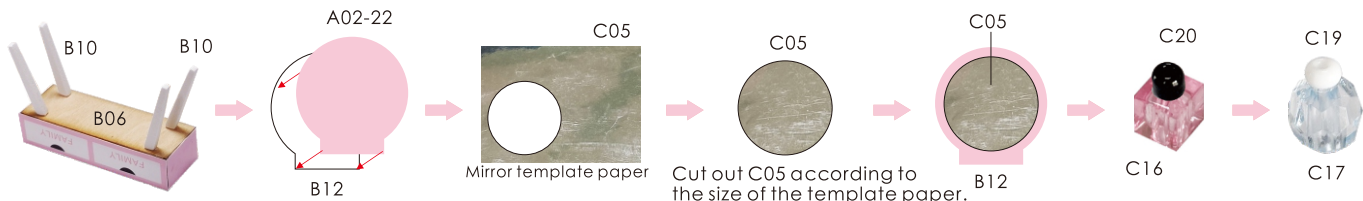
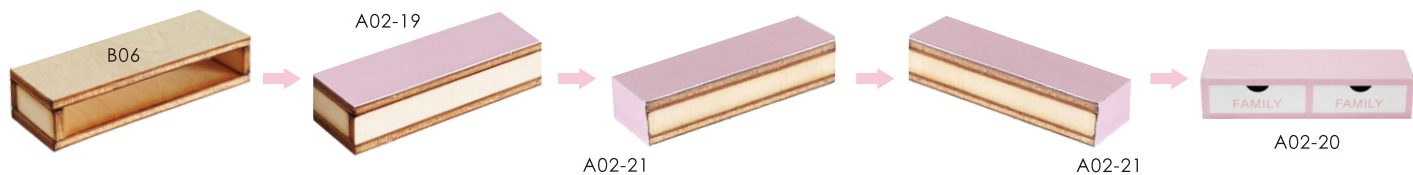
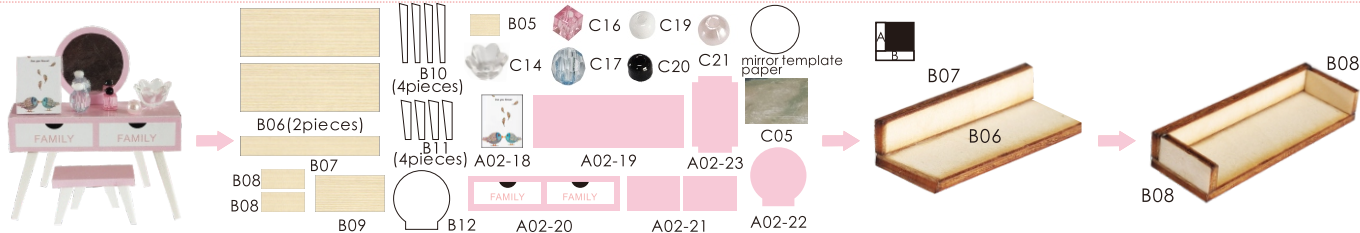


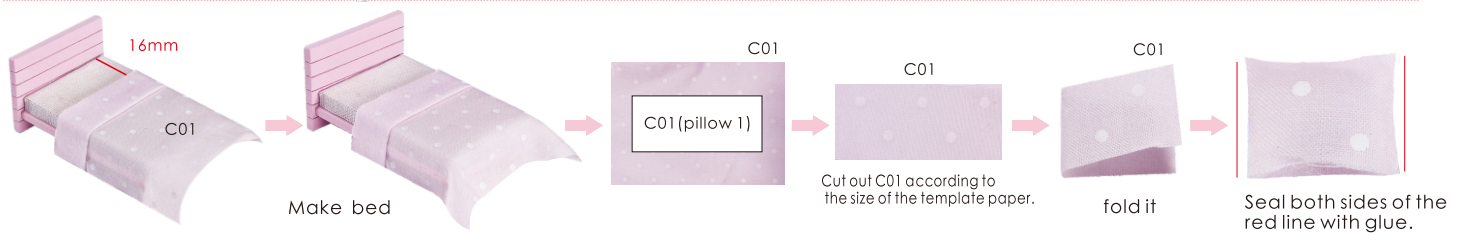
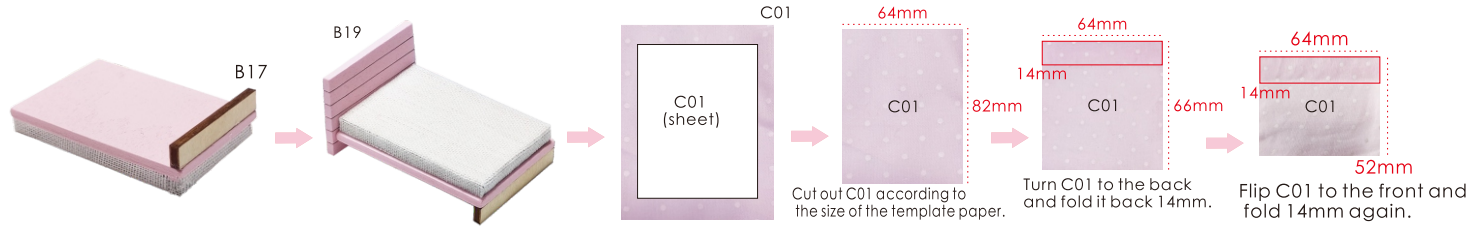
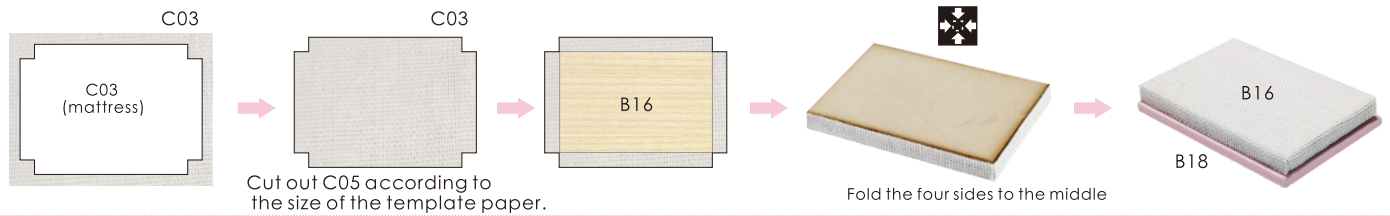
combination part according to so on.

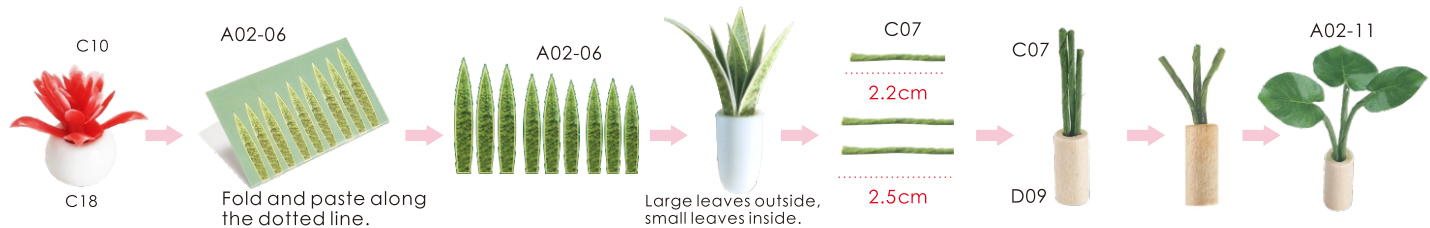
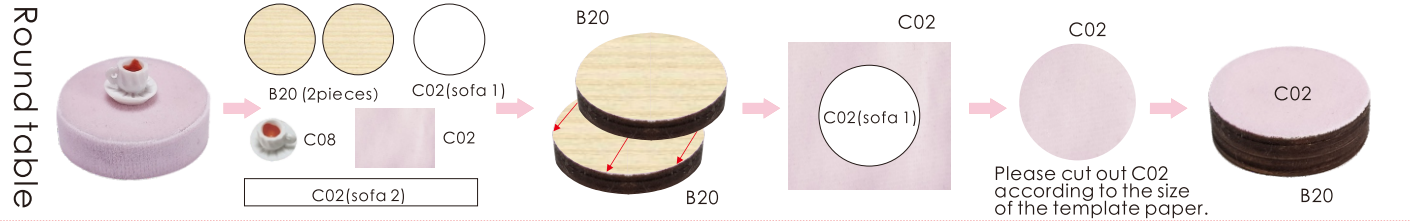
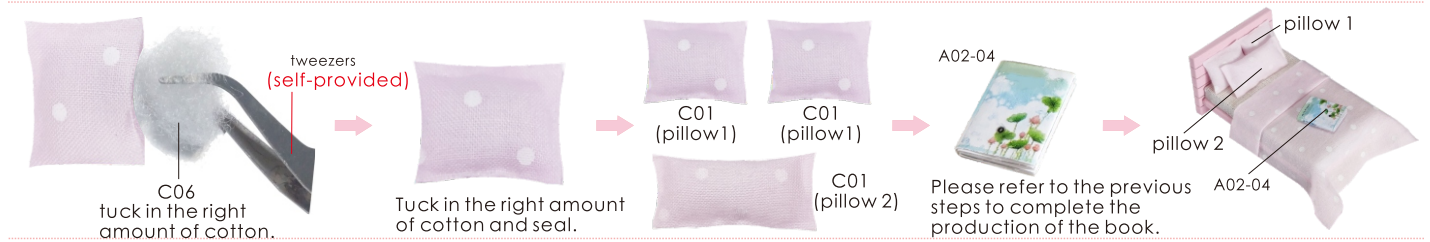
Cabinet



Dressing table

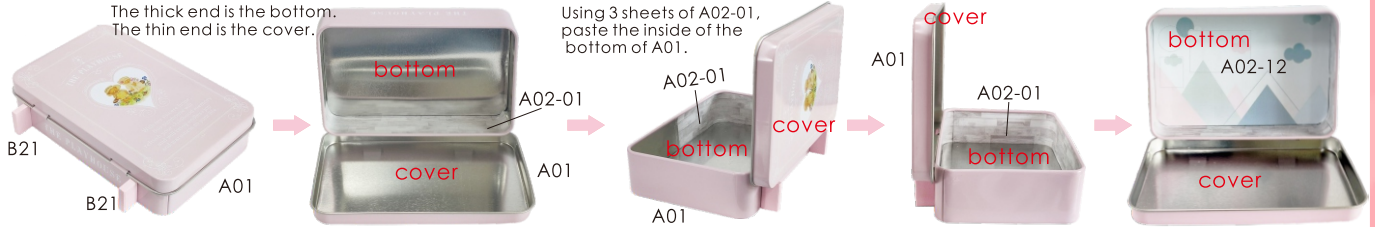






Outer frame

The thick end is the bottom.
The thin end is the cover.

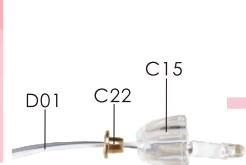


Using 3 sheets of A02-01, paste the inside of the bottom of A01.



Use 3 pieces of A02-02 to paste the inside of the A01 cover.

Please note the direction of the black dashed line A02-05.



Insert C15 and C22 into D01.



Please stick to the line of the light according to the red line.

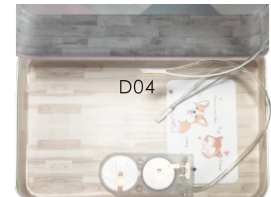
How to assemble the battery holder
Statement: the lamp wires cannot be inserted into the output socket.

- Can use 3V button batteries
- Please notice the place of anode and cathode when put in the batteries
- Rechargeable batteries are not blunt electricity
- Rechargeable batteries can only be charged under adult supervision
- Rechargeable batteries should be removed from the toy before charging
- Different types of batteries cannot mix;
- Do not mix new batteries in use with semi-used batteries.
- Run out of battery should be removed from the toy
- The power shall not be short circuit



3. Twist the following wire together:

- (I) Silver wire from the battery box with the GREY wire from LED bulb.
- (II) GOLD wire from the battery box with the WHITE wire from LED bulb.



Wrap the lamp wire connection with D04.



Tuck the battery box and part of the battery holder into the back of the cabinet.



In order to facilitate access to the battery box, do not need to fix the cabinet.



Attention: Please keep the instruction for future enquires after installation.