

\$933



Summer Theater  
S933 Instruction manual

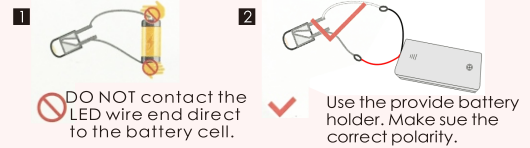
# NOTICE OF ASSEMBLE

## Tips for assembling

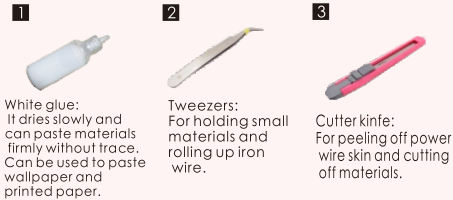
1. Pictures shown on the package may be slightly different from the actual product.
2. All the materials are taken in the operation step, put the remaining materials back into the original pocket until the installation is completed. (Avoid material loss during installation)
3. The dimensions indicated in the step diagram are "cm".
4. If there have template paper material, please cut the material according to the template to avoid mistakes..
5. According to the part rule example at the bottom of this page, refer to the part on the part number drawing, find the material object and compare with the material list, confirm and install. (Wooden parts only)
6. Glue should not be applied too much, so as not to dry longer, overflow will affect the effect of the finished product.
7. Part shapes may differ from the photographs depending on the production batch

## Testing on LED function

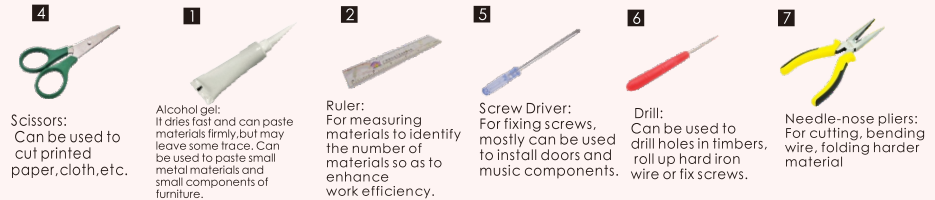
Be sure to test the LED lights before making the lighting, note that the LED white wire to the negative, gray wire to the positive reference to the following figure operation test.



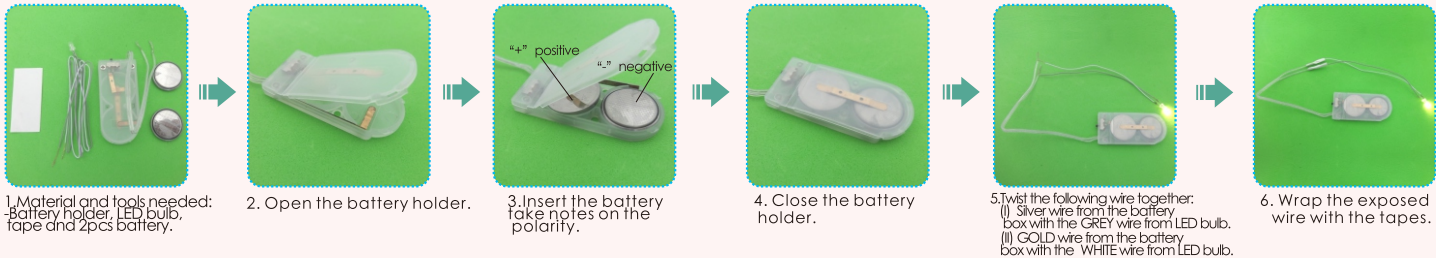
## Product comes with tool:



## Bring your own tools:

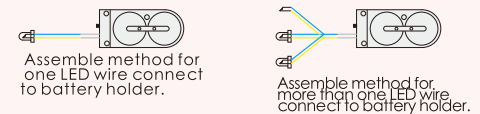


## How to assemble the battery holder



## Example of parts rule:

A01: The parts are directly in the box.; B01: parts in bag B; C01: part in bag C, and so on.  
 (Note: display the printing paper A05-01 in the step: the printing paper is placed directly in the box, part number is A05-01)



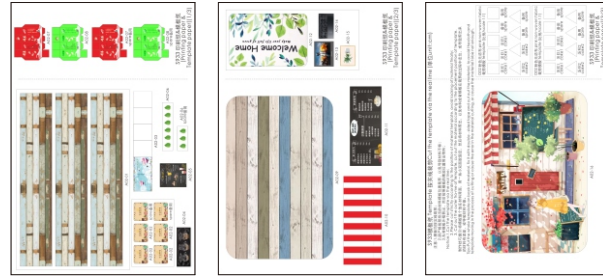
# NOTICE OF ASSEMBLE

## details of miniature

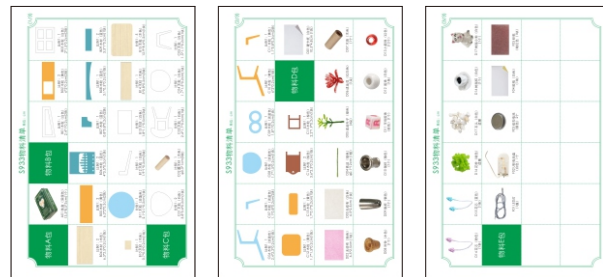
| Name           | Material package  |
|----------------|---|
| printing paper | Bag A-A02(All printing and template papers are shown on A02 paper, total 3 piece of A5) |
| sales counter  | B bag + D bag + E bag + printing paper  |
| wall deco      | B bag + D bag+ printing paper   |
| round table    | B bag+ printing paper   |
| table          | C bag + D bag + printing paper  |
| chair          | C bag   |
| blackboard     | C bag + printing paper  |
| potted plant   | D bag + printing paper  |
| outer frame    | B bag + C bag + D bag + printing paper  |

Welcome to the little DIY world, now come with me!

## Thumbnail of material list (reference only)



## Thumbnail of printing paper & template paper (reference only)



## Symbol description used



Install parts in the opposite direction



Install the same parts on both sides



Pay attention to the direction of installation material B



Pay attention to the direction of installation material A



Pay attention to the direction of installation material B



Pay attention to the direction of installation material A



Fold in half according to dotted line



fold double edge to center dotted line



Fold four sides to the middle



Pay attention to the direction of installation material A



Pay attention to the direction of installation material B



Pay attention to the direction of installation material A

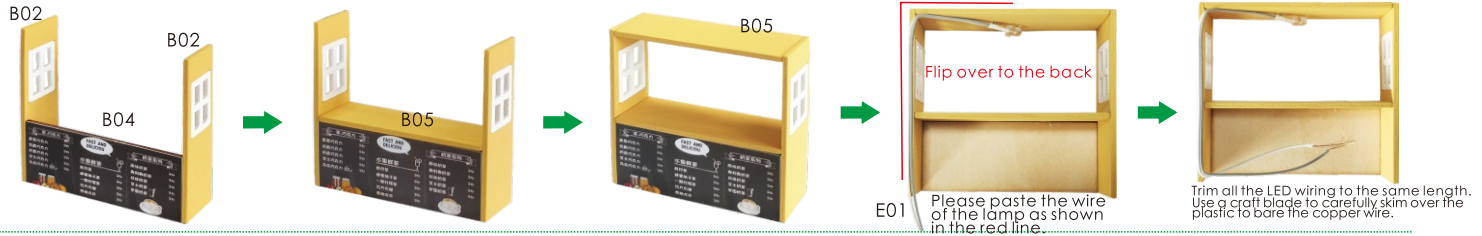
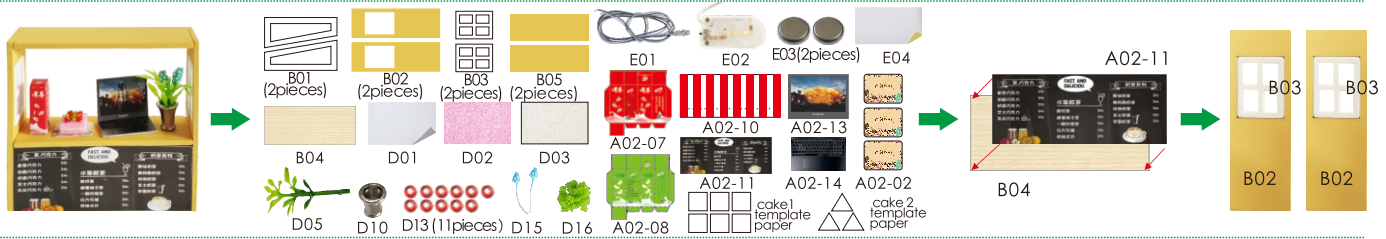


Pay attention to the direction of installation material B

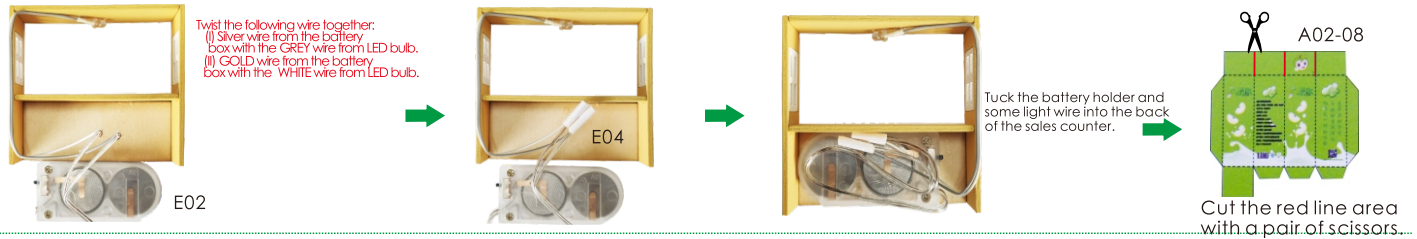


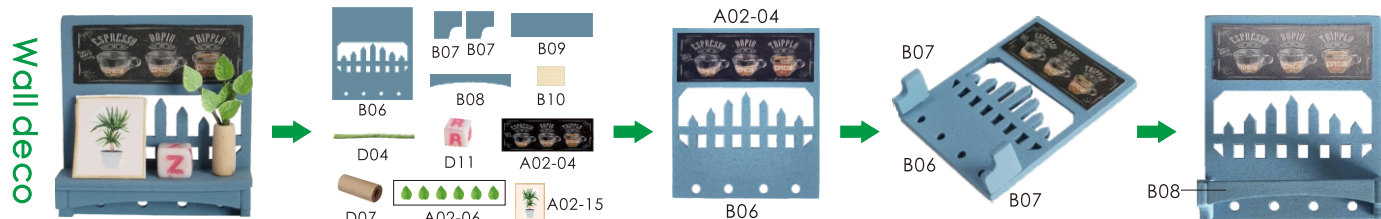
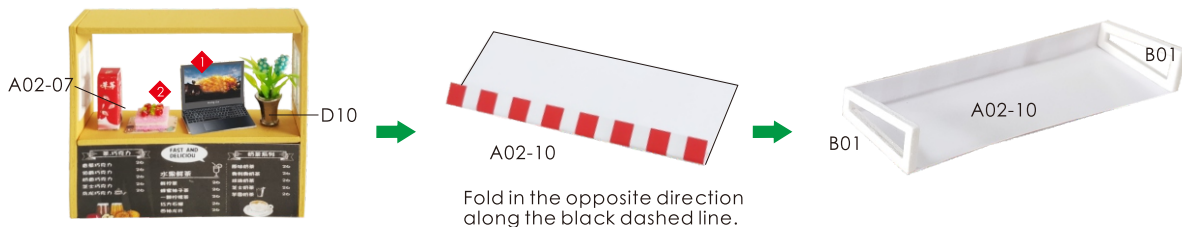
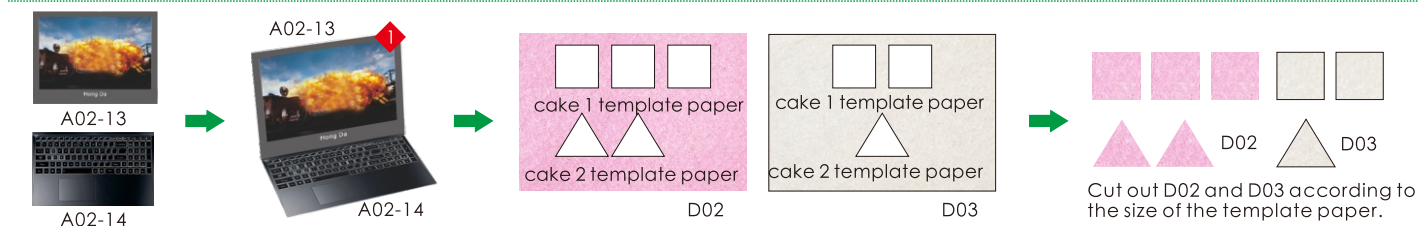
combination part according to dotted line and so on.

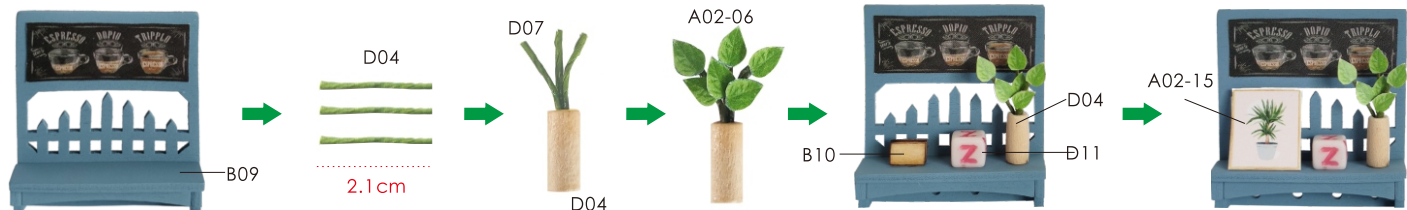
Sales counter



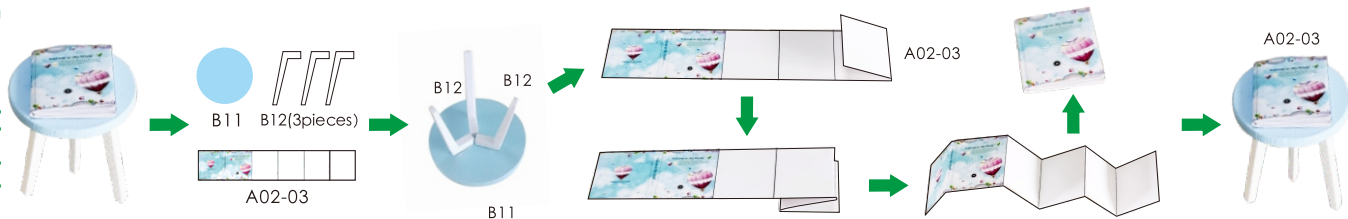
Trim all the LED wiring to the same length. Use a craft blade to carefully skim over the plastic to bare the copper wire.



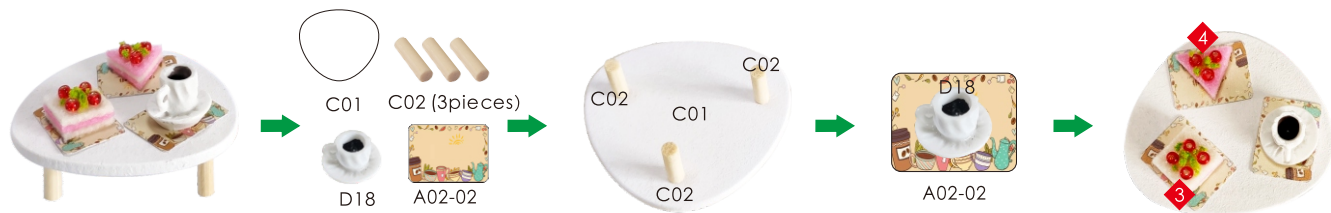




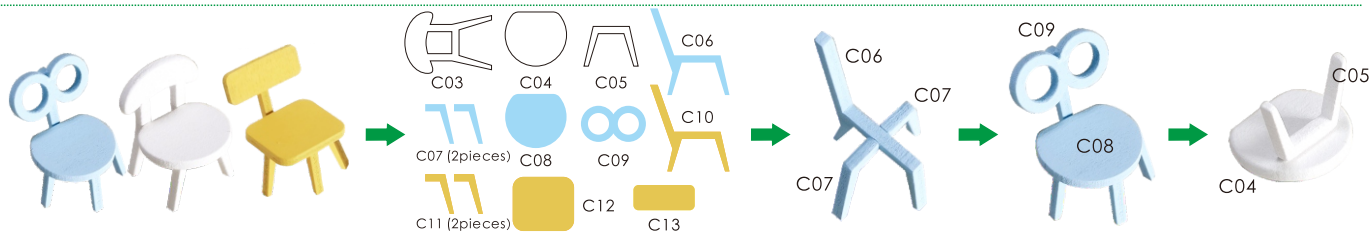
Round table

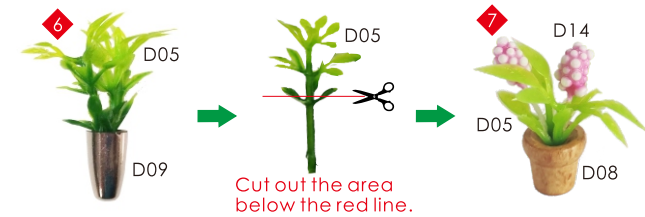
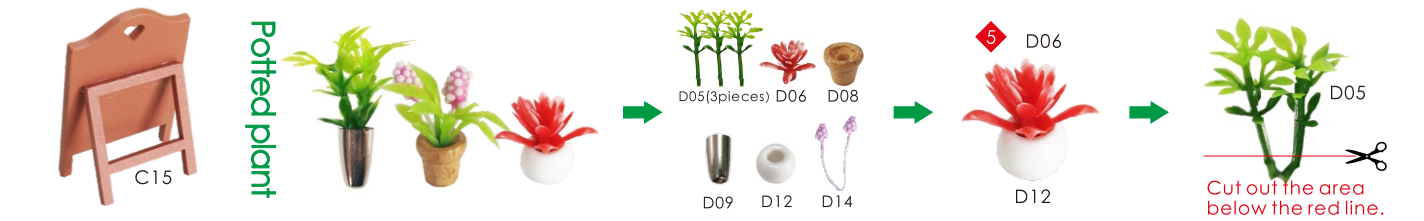


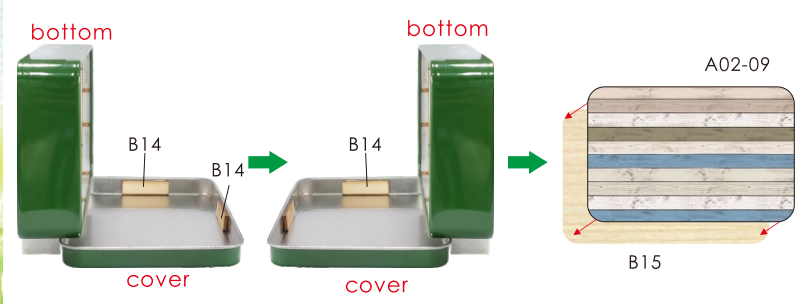
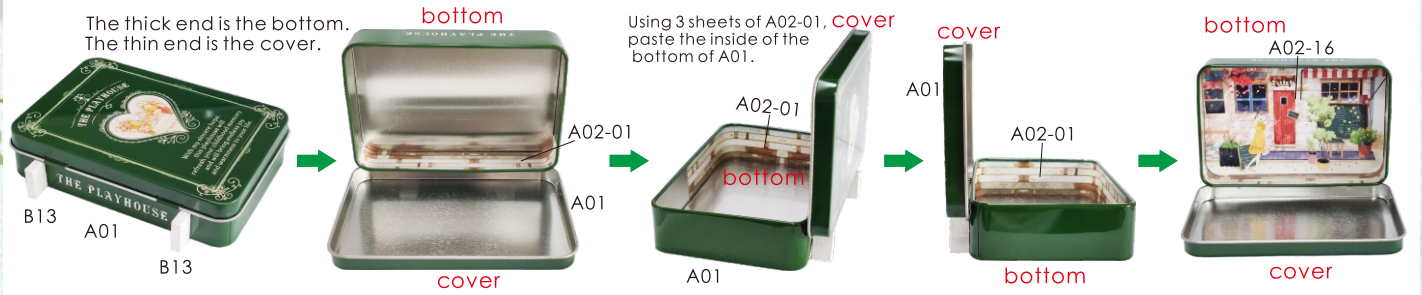
Table



Chair







**Attention: Please keep the instruction for future enquires after installation.**